



AC1750 Wireless Dual Band Gigabit Router

High-Speed Wi-Fi for Faster
Connections Across Your Home

Archer C7



450Mbps + 1300Mbps
Dual Band Wi-Fi



Gigabit Ports





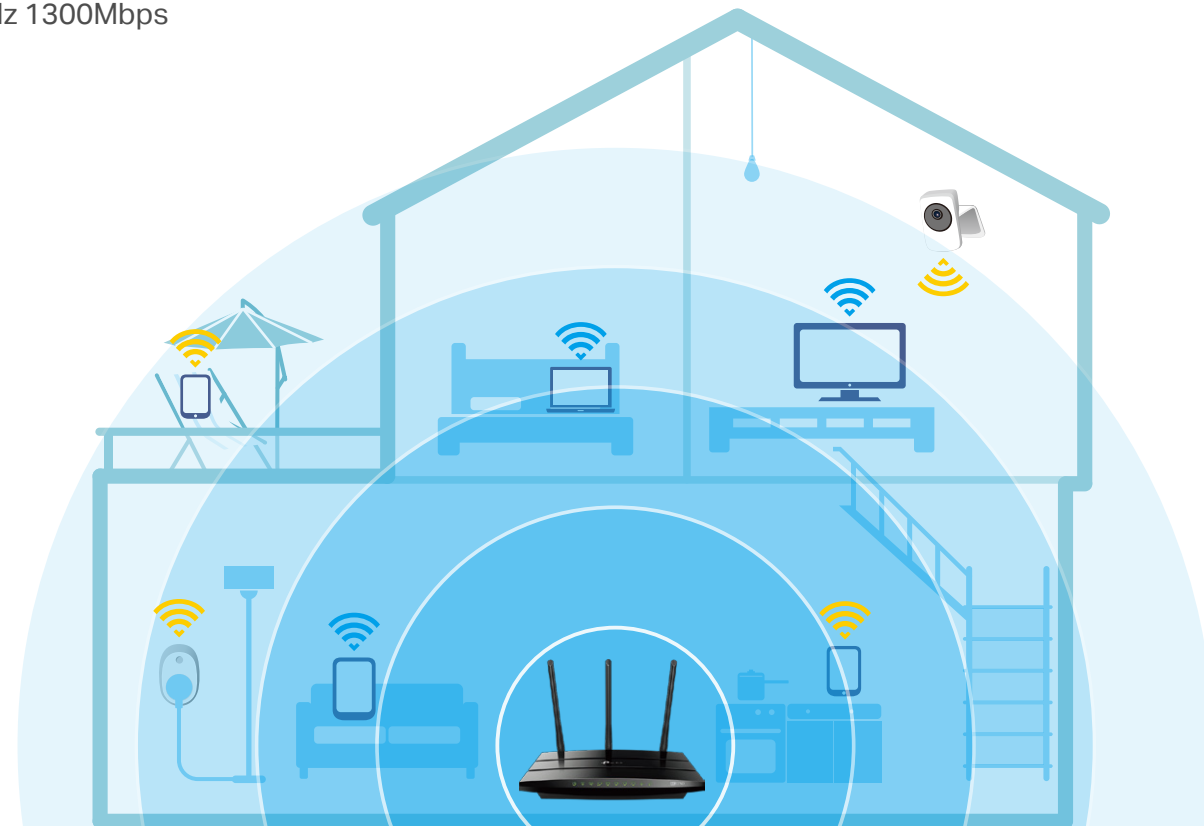
USB 2.0 Port

Highlights

Faster, More Reliable Wi-Fi

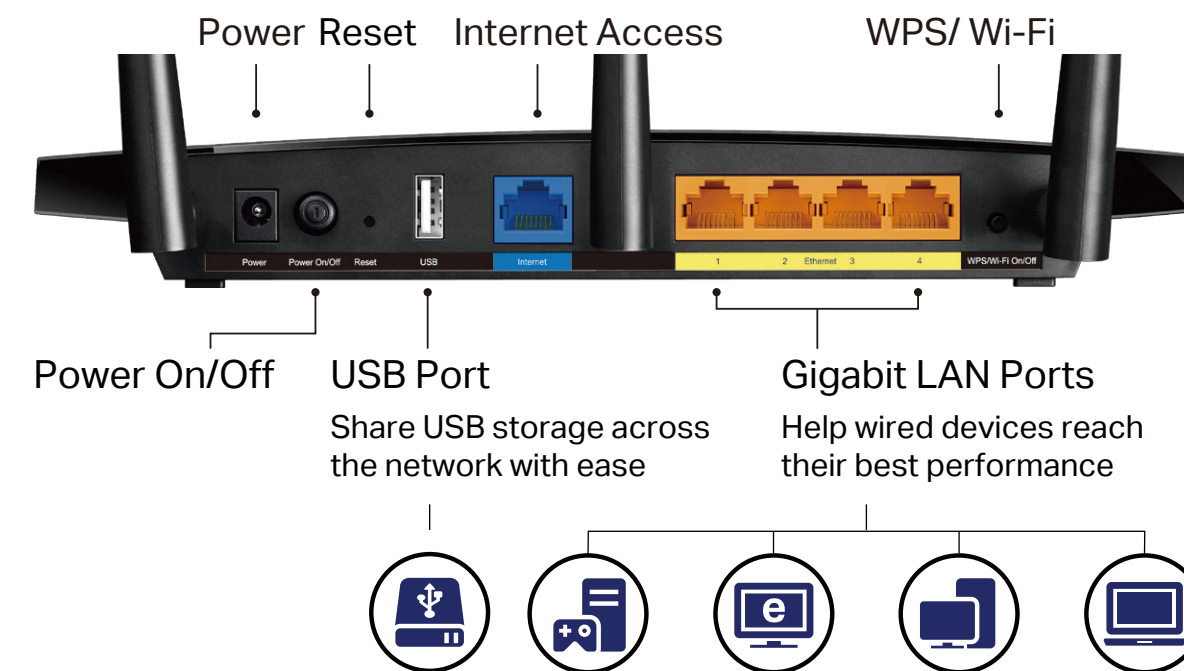
The Archer C7 covers your home with fast dual band Wi-Fi. The strong 2.4GHz (450Mbps) Wi-Fi band is perfect for sending emails, browsing the web and listening to music. The 5GHz band reaches 1300Mbps so you can game and stream in HD at the same time without interruption.

-  2.4GHz 450Mbps
-  5GHz 1300Mbps



Powerful Connections

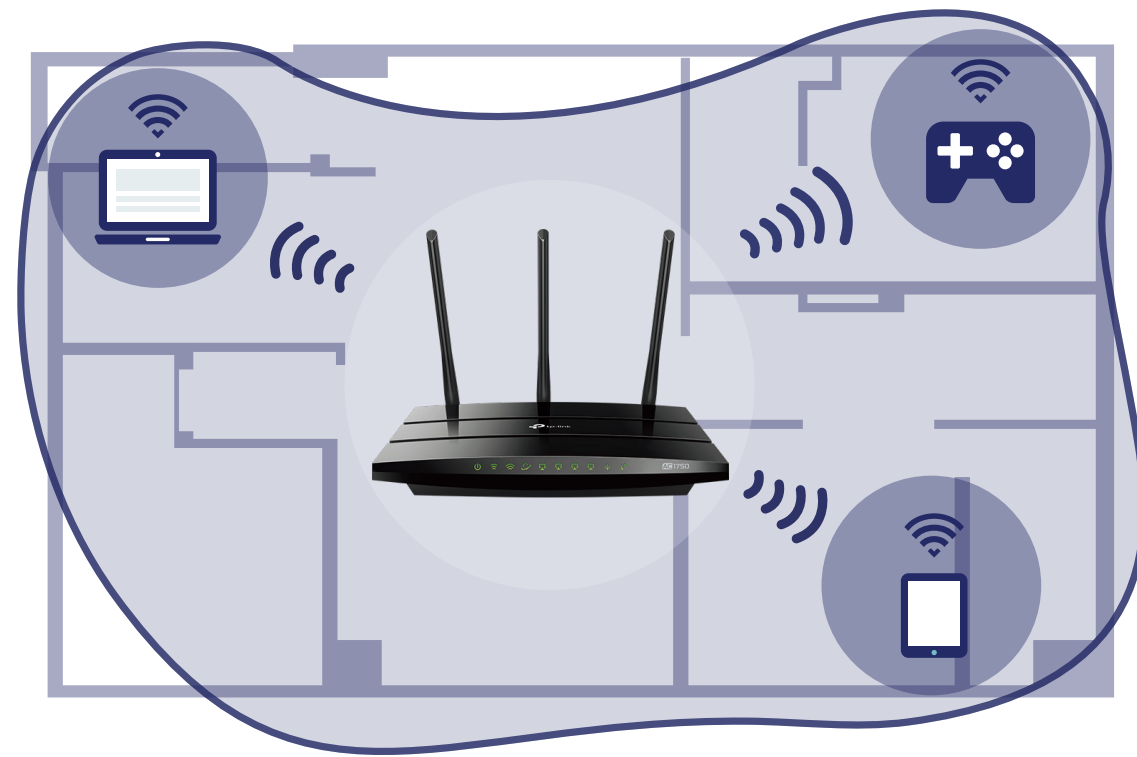
The Archer C7's USB 2.0 port makes it easy to connect external drives to the router, letting you quickly share files, photos, video, and music wirelessly. Achieve peak performance with your wired devices through Gigabit Ethernet ports that can operate 10× faster than standard Ethernet.



Highlights

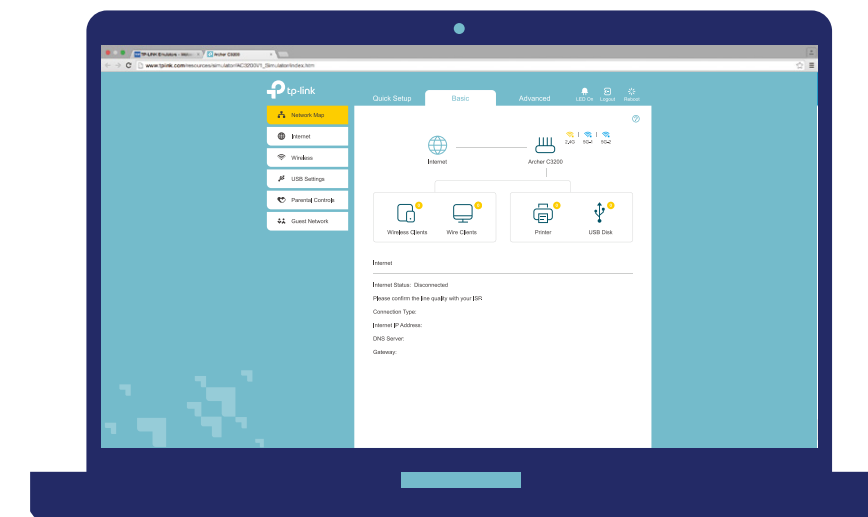
Better Coverage

Three external omni directional antennas create strong, clear and dependable Wi-Fi throughout your home.

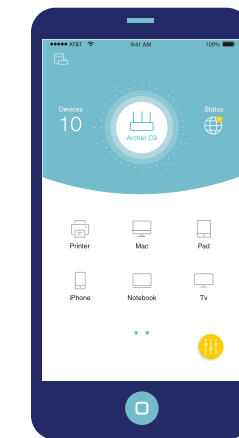


Easy Setup and Use

Installation is simple, thanks to an intuitive web interface and the powerful TP-Link app, Tether.



Intuitive Web Interface



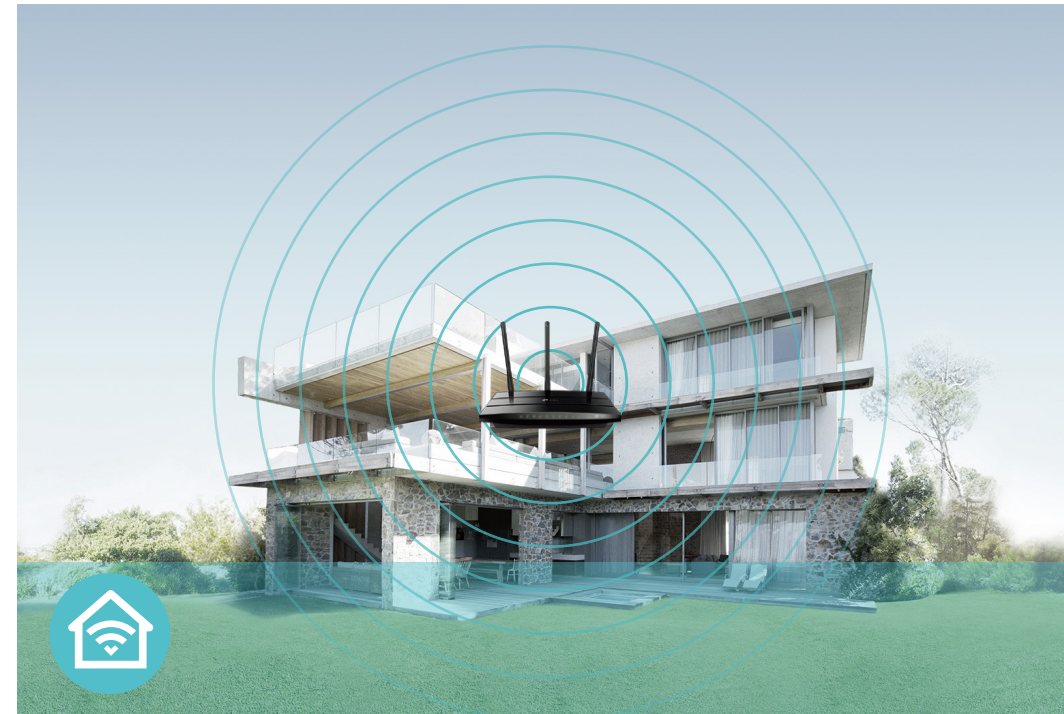
TP-Link Tether

Features



Speed

- **Ultimate Wireless Speed** – Combined wireless speeds up to 450Mbps over 2.4GHz and 1300Mbps over 5GHz
- **Support 802.11 ac** – Provides a data transfer rate 3 times faster than 802.11n for each stream



Wi-Fi Range

- **Ultimate Range Wi-Fi** – 3 dual band high-performance antennas with a high-powered amplifier ensure the widespread Wi-Fi coverage and a stable connection



Reliability

- **Simultaneous Dual Band** – Separate Wi-Fi bands enable more devices to connect to your network without a drop in performance
- **Easy Bandwidth Management** – Advanced QoS makes it easier for you to manage the bandwidth of connected devices

Features



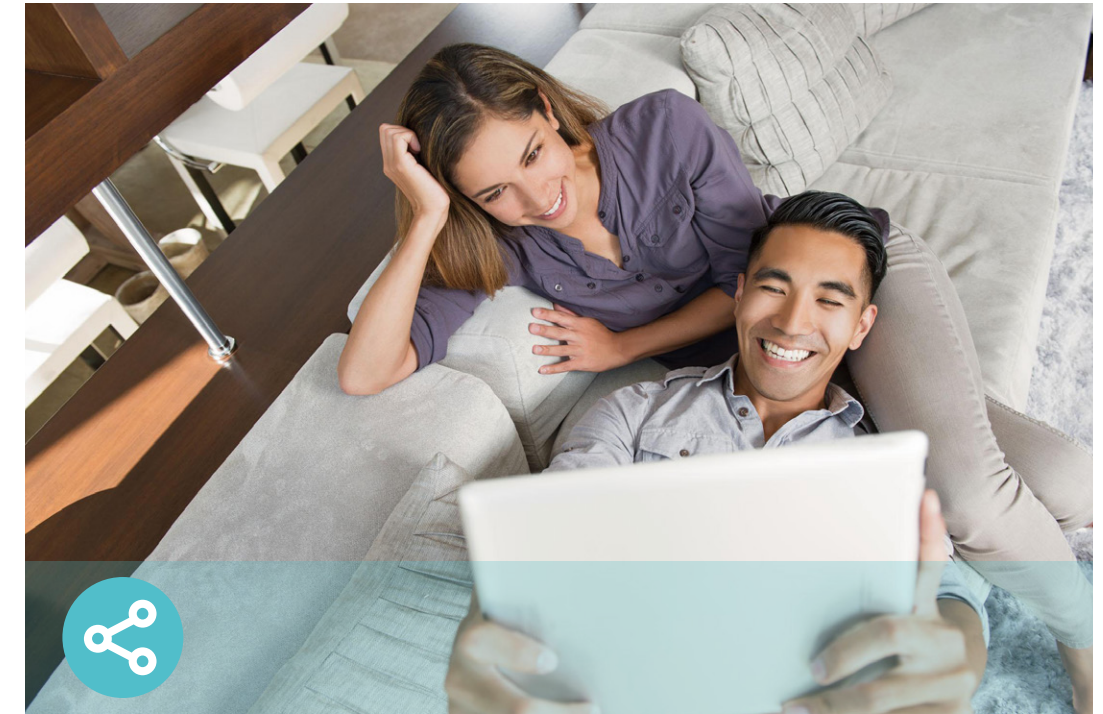
Ease of Use

- Intuitive Web UI – Ensures quick and simple installation without hassle
- Fast Encryption – One-touch WPA wireless security encryption with the WPS/Wi-Fi button
- Wi-Fi On/Off – Turns on/off wireless radio as needed using the WPS/Wi-Fi button
- Power On/Off – Conveniently powers on or off your router as required
- Hassle-free Management with Tether App – Network management is made easy with the TP-Link Tether app, available on any Android and iOS device



Security

- Guest Network – Keeps your main network secure by creating a separate network for friends and visitors
- Access Control – Establishes a whitelist or blacklist to allow or restrict certain devices to access the internet
- Parental Controls – Restricts internet access time and contents for children devices
- VPN Server – PPTP VPN and OpenVPN are supported, making it easy to set up a secure connection between your private network and the internet
- Encryptions for Secure Network – WPA-PSK and WPA2-PSK encryptions provide active protection against security threats



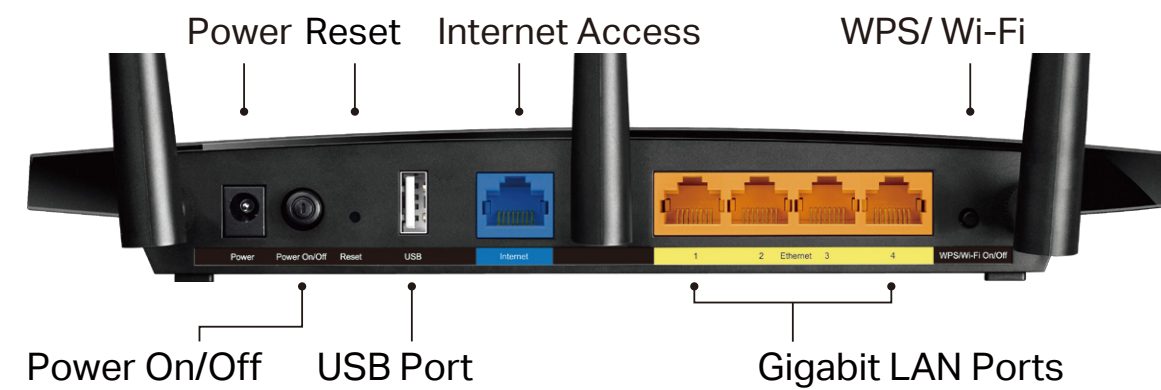
Easy Sharing

- USB Port for Fast Sharing – With the USB 2.0 port, you can access and share your files and media locally. Through the router's FTP server, you can also access your files and media from network devices remotely
- Built-in Media Server – Allows you to play music, watch videos and view photos from any device on your network
- Offline Download – Allows you to download files without keeping your computer powered on all the time

Specifications

Hardware

- Ethernet Ports: 4 10/100/1000Mbps LAN Ports, 1 10/100/1000Mbps WAN Port
- USB Ports: 1 USB 2.0 Port
- Buttons: Power On/Off Button, Reset Button, WPS/Wi-Fi On/Off Button
- Antennas: 3 Fixed Antennas
- External Power Supply: 12VDC/1.5A
- Dimensions (W x D x H): 9.6x6.4x1.3 in. (243 X 160.6 X 32.5mm)



Wireless

- Wireless Standards: IEEE 802.11ac/n/a 5GHz, IEEE 802.11b/g/n 2.4GHz
- Frequency: 2.4GHz and 5GHz
- Signal Rate: 1300Mbps at 5GHz, 450Mbps at 2.4GHz
- CE EIRP: <20dBm(2.4GHz), <23dBm(5GHz)
- FCC Transmit Power: <30dBm(2.4GHz & 5GHz)
- Reception Sensitivity:
 - 5GHz:
 - 11a 6Mbps: -93dBm, 11a 54Mbps: -76dBm
 - 11ac HT20 mcs8: -68dBm, 11ac HT40 mcs9: -64dBm
 - 11ac HT80 mcs9: -61dBm
 - 2.4GHz:
 - 11g 54Mbps: -77dBm
 - 11n HT20 mcs7: -74dBm, 11n HT40 mcs7: -72dBm
- Wireless Function: Enable/Disable Wireless Radio, WDS Bridge, WMM, Wireless Statistics
- Wireless Security: Enable/Disable SSID Broadcast, 64/128-bit WEP, WPA/WPA2, WPA-PSK/WPA-PSK2 encryptions, QSS

Specifications

Software

- Quality of Service: WMM
- WAN Type: Dynamic IP, Static IP, PPPoE, PPTP(Dual Access), L2TP(Dual Access), Bigpond
- Management: Access Control, Local Management, Remote Management
- DHCP: Server, DHCP Client List, Address Reservation
- Port Forwarding: Virtual Server, Port Triggering, UPnP, DMZ
- Dynamic DNS: DynDns, NO-IP, TP-Link
- VPN Server: PPTP, Open VPN
- Access Control: Parental Control, Local Management Control, Blacklist, Whitelist
- Firewall Security: DoS, SPI Firewall, IP and MAC Address Binding
- Protocols: IPv4, IPv6
- USB Sharing: Supports Samba(Storage), FTP Server, Media Server, Offline Download
- Guest Network: 2.4GHz guest network x 1, 5GHz guest network x 1

Others

- Certification:
CE, FCC, RoHS
- System Requirements:
Microsoft Windows 98SE/NT/2000/XP/Vista™/7/8/8.1/10, MAC OS, NetWare, UNIX or Linux
Internet Explorer 11, Firefox 12.0, Chrome 20.0, Safari 4.0, or other Java-enabled browser
Cable or DSL Modem
Subscription with an internet service provider (for internet access)
- Environment:
Operating Temperature: 0°C~40°C (32°F ~104°F)
Storage Temperature: -40°C~70°C (-40°F ~158°F)
Operating Humidity: 10%~90% non-condensing
Storage Humidity: 5%~90% non-condensing
- Package Contents
Wireless Router Archer C7
Power Adapter
RJ45 Ethernet Cable
Quick Installation Guide



For more information, please visit

<http://www.tp-link.com/en/products/details/Archer-C7.html>

or scan the QR code left

©2018 TP-Link

* Maximum wireless signal rates are the physical rates derived from IEEE Standard 802.11 specifications. Actual wireless data throughput and wireless coverage are not guaranteed and will vary as a result of 1) environmental factors, including building materials, physical objects, and obstacles, 2) network conditions, including local interference, volume and density of traffic, product location, network complexity, and network overhead, and 3) client limitations, including rated performance, location, connection, quality, and client condition.

www.tp-link.com

TP-Link AC1750 Wireless Dual Band Gigabit Router **Archer C7**